

linear probing

$$C_N \approx \frac{1}{2} \left(1 + \frac{1}{1-\lambda} \right) \quad \text{for successful search}$$

$$C'_N \approx \frac{1}{2} \left(1 + \left(\frac{1}{1-\lambda} \right)^2 \right) \quad \text{for unsuccessful search}$$

double hashing

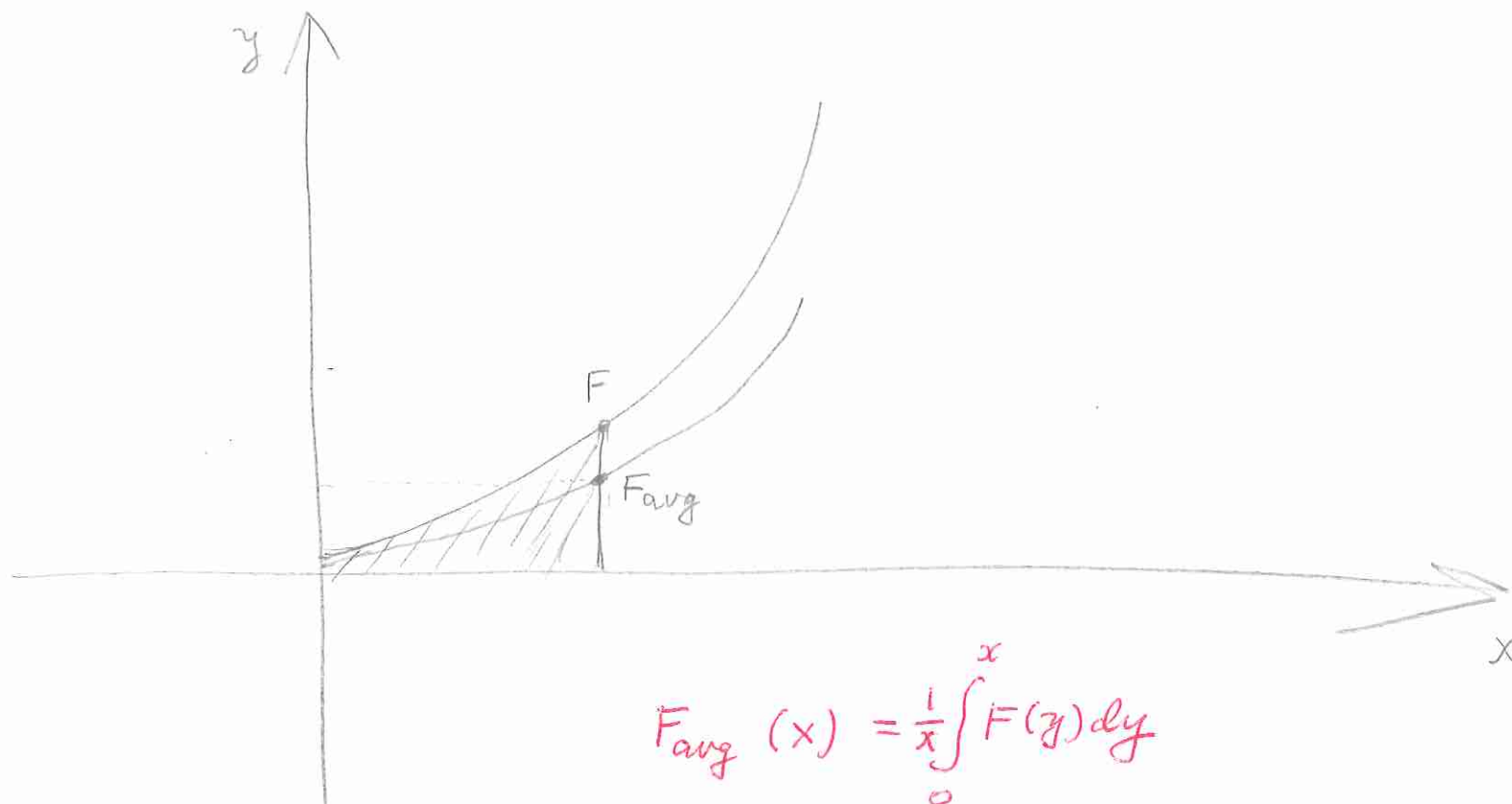
$$C_N \approx \frac{1}{\lambda} \ln \left(\frac{1}{1-\lambda} \right) \quad \text{for successful search}$$

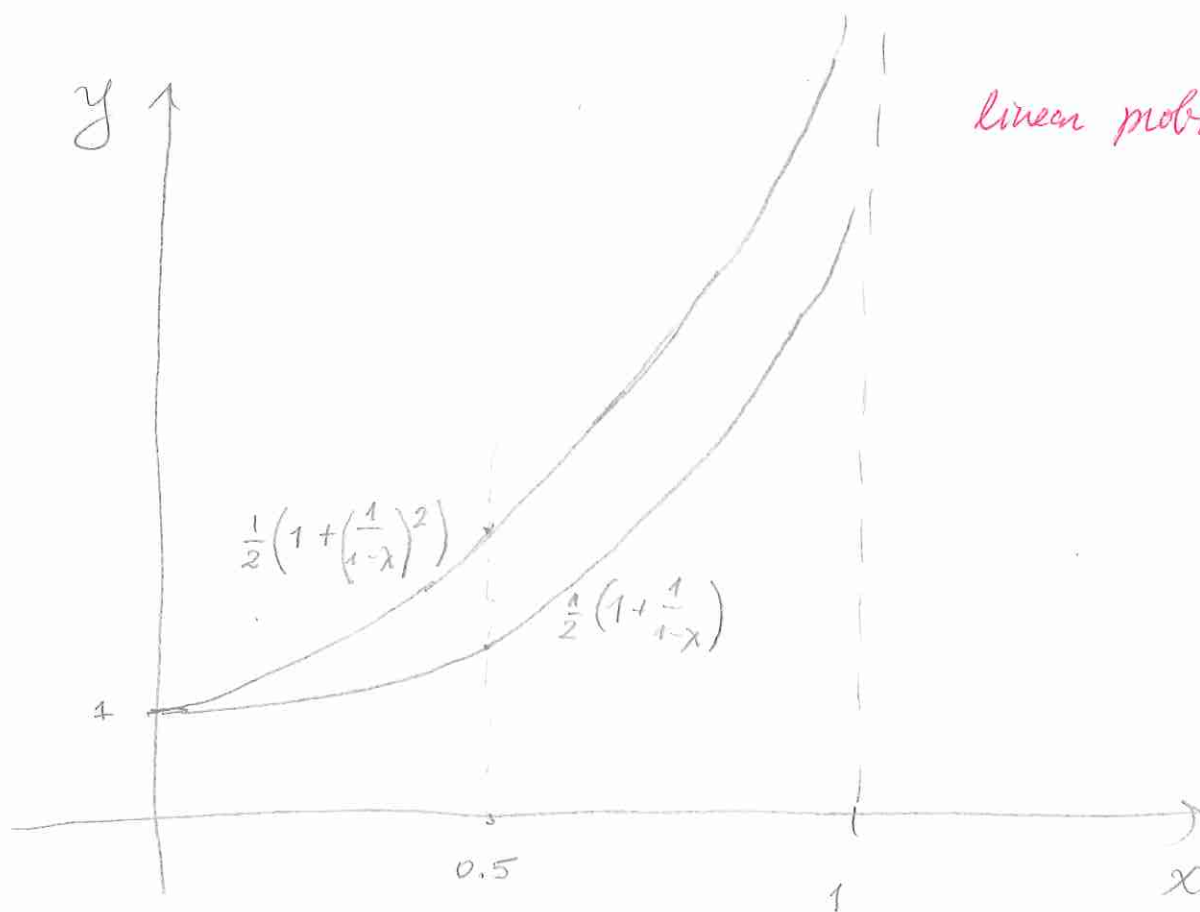
$$C'_N \approx \left(\frac{1}{1-\lambda} \right) \quad \text{for unsuccessful search}$$

separate chaining

$$C_N \approx 1 + \frac{1}{2} \lambda \quad \text{for successful search}$$

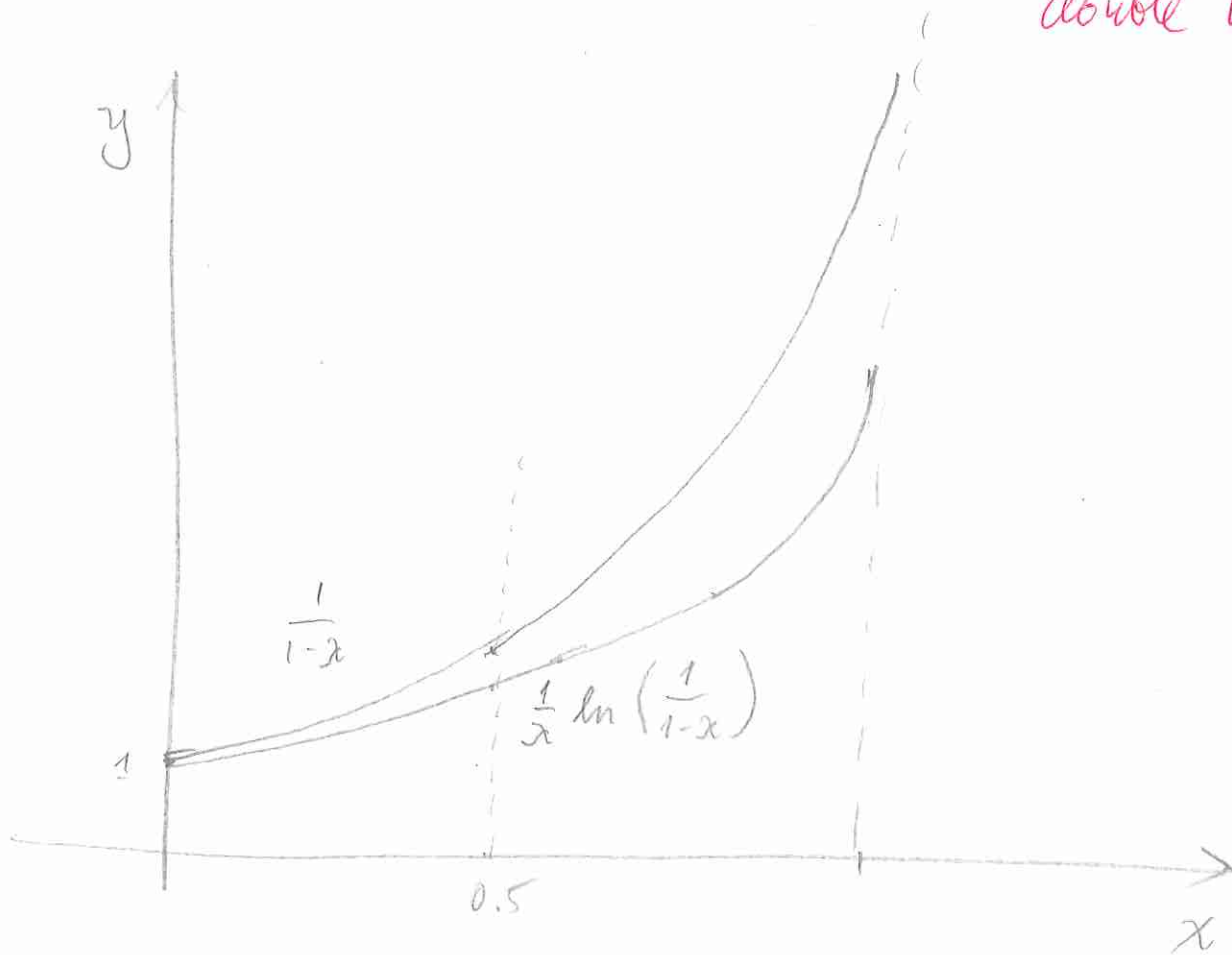
$$C'_N \approx \lambda \quad \text{for unsuccessful search}$$





linear probing

double hashing



separate chaining

